

Get **ONLINE TRAINING**: [www.controleng.com](http://www.controleng.com)



**EZAutomation.net**

HMI's, PLC's, HMI+PLC, Marquees, SCADA, Panel PCs, & thousands more Direct from Factory



Exceptionally Innovative



Top Quality



Sold FactoryDirect

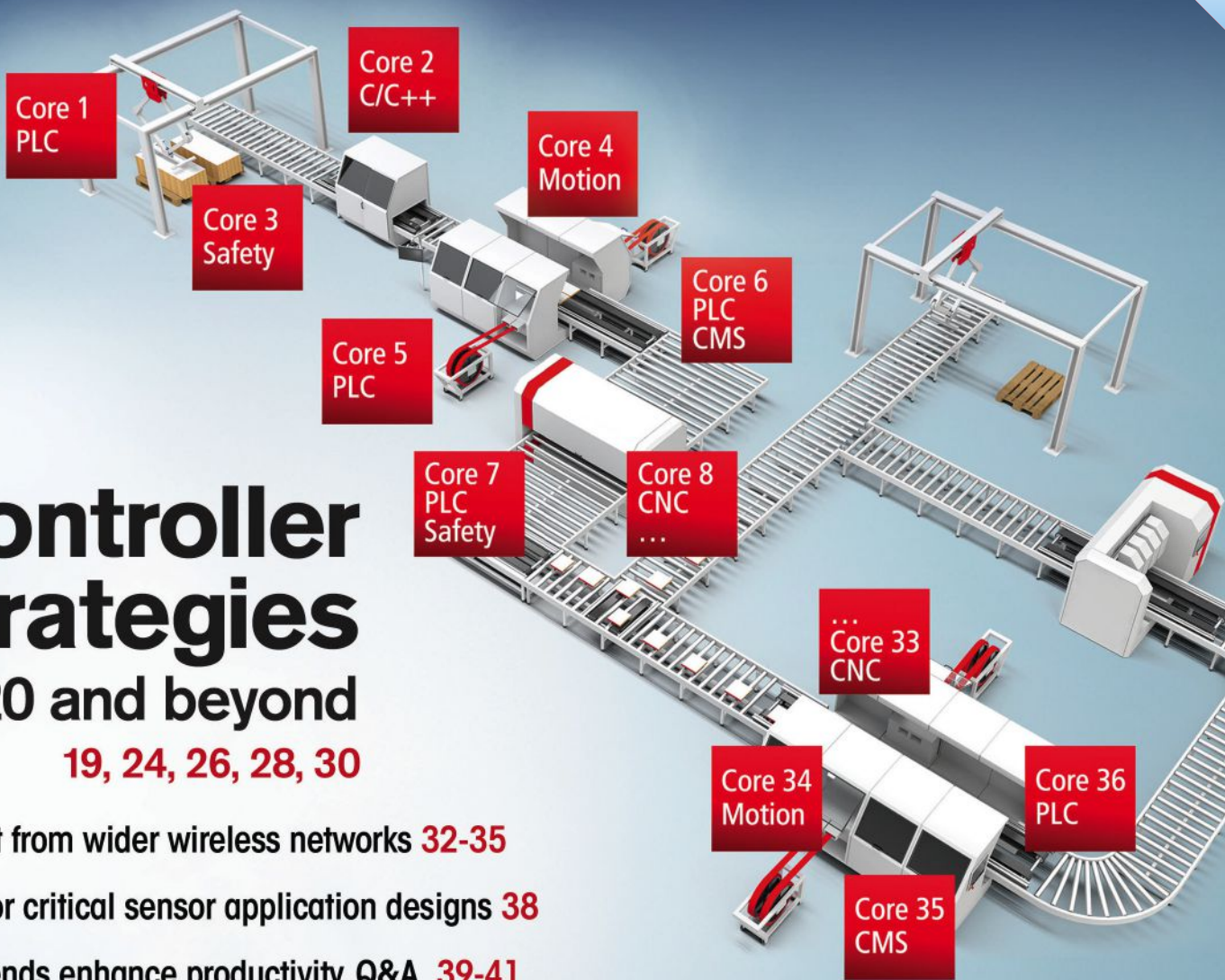


Since 1968

# CONTROL ENGINEERING

JANUARY 2020

Covering control, instrumentation, and automation systems worldwide



## Controller strategies 2020 and beyond

19, 24, 26, 28, 30

Benefit from wider wireless networks **32-35**

Help for critical sensor application designs **38**

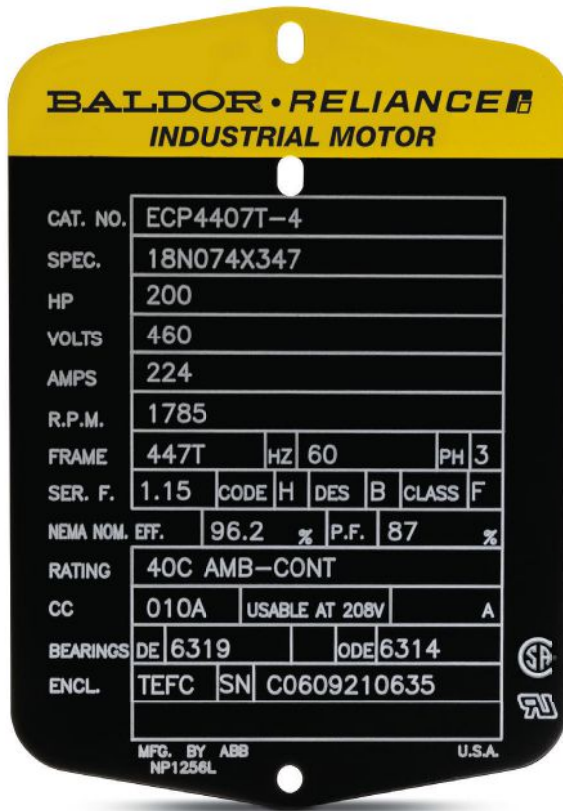
3-D trends enhance productivity, Q&A **39-41**

Think again: What can hot topics teach us? **22**

CFE Media®

[www.controleng.com](http://www.controleng.com)





# The sign of reliability



For more than 100 years, ABB has developed a reputation for marketing, designing and manufacturing the most reliable industrial electric motors available. Azima, Inc. confirmed this in their Reliability Rating Report in which they stated that “ABB produces the majority of models scoring highest for reliability in 2018.”

When reliability counts, look for the **sign of reliability** from ABB.

479.646.4711  
baldor.abb.com





---

## Safer design faster installation



**DODGE**

Easy to remove, quick to install, and highly reliable in the harshest environments, ABB's new Dodge® Safety Mount spherical roller bearing is ideally suited for a variety of demanding industrial applications. This innovative solution combines the advantages you rely on in today's Dodge Imperial bearings with features that improve the safety and productivity of your operation.

**Safe. Fast. Reliable.**

479-646-4711  
baldor.abb.com

**ABB**

# Most PLCs will do, but only some will *Do more!*

INDUSTRY  
IIoT  
**4.0**

# BRX

Starting at **\$197.00**

(BX-DM1-10AR-D)

with **FREE Software**

Modbus®  
EtherNet/IP  
ASCII  
MQTT  
HTTP  
DMX512

The Do-more! BRX PLC series is loaded with hardware and software features that provide an extensive toolbox to satisfy even the most demanding projects.

- Four form factors to choose from
- Serial/Ethernet comm ports included on most models (with support for Modbus RTU/TCP, ASCII, EtherNet/IP, MQTT and HTTP)
- Built-in discrete, analog and high-speed I/O with advanced motion control
- Internal RAM and microSD data logging
- Free PLC programming software with over 200 easy-to-use instructions, integrated video help, and a convenient project simulator

## Check out what's new:

- **NEW!** Temperature combination modules combine RTD or thermocouple inputs with current outputs for monitoring and control from the same module!
- **NEW!** Two high-speed I/O expansion modules (BX-HSIO1 and 2) and a serial communications module (BX-SERIO) have been added, giving BRX PLCs even more motion and communication capabilities
- **NEW!** High-density 16-channel analog input modules and space-saving combination analog in/out modules
- **NEW!** JSON PARSE/BUILD instructions, along with the HTTP protocol addition, enable communication between BRX PLCs and data rich web servers
- **NEW!** The DMX512 protocol allows BRX PLCs, using the BX-SERIO module, to control stage/theater lighting and effects

[www.BRXPLC.com](http://www.BRXPLC.com)



**AUTOMATIONDIRECT** com  
1-800-633-0405 the #1 value in automation

input #1 at [www.controleng.com/information](http://www.controleng.com/information)

# Switch on Over for Value

AutomationDirect has great deals on limit switches!

## Low-cost Limit Switches

We have a vast inventory of limit switch options to choose from. You can always trust AutomationDirect for dependable presence sensing solutions at affordable prices!

- Precision Limit Switches
- Compact Limit Switches
- Heavy Duty Metal IEC Limit Switches
- Double Insulated Plastic IEC Limit Switches
- Plastic Compact Limit Switches
- Pneumatic Limit Switches



## Also Available

Eaton NEMA Limit Switches



Heavy Duty Metal IEC Limit Switches



Precision Limit Switches



Research, price, buy at:

[www.automationdirect.com/limit-switch](http://www.automationdirect.com/limit-switch)

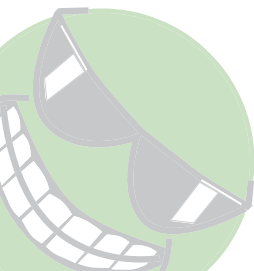
## Plastic Compact Limit Switches Starting at \$15.00

- Compact size with standard 25 mm hole spacing
- 1 N.O. and 1 N.C. contact on all units
- Available with 1m cable or 5-pin M12 quick disconnect (right exit)
- Double insulated plastic housings
- IP67 dustproof/water-resistant



## Compact Limit Switches with Halogen-free Cable Starting at \$24.00

- Compact size with standard 25 mm hole spacing
- 1 N.O. and 1 N.C. contact on all units
- 1m halogen-free cable
- Die-cast metal housings
- IP67 dustproof/water-resistant



Order Today, Ships Today!



**AUTOMATIONDIRECT**.com  
1-800-633-0405 the #1 value in automation

\*See our Web site for details and restrictions. © Copyright 2019 AutomationDirect, Cumming, GA USA. All rights reserved.

input #2 at [www.controleng.com/information](http://www.controleng.com/information)



# Experienced Automation Engineer

## Need experience?

**Problem:** You can't recruit or retain experienced motion control engineers.

**Solution:** If you have new engineers, our solution modules empower them to quickly and easily perform complex automation. No experience needed!

If you're short on engineers, we can provide a complete package, including project planning, software, components, commissioning, and worldwide support.

Either way, we got this!



**SEW**  
**EURODRIVE**

— Driving the World —

[seweurodrive.com](http://seweurodrive.com) / 864-439-7537

input #3 at [www.controleng.com/information](http://www.controleng.com/information)

# Ignition!8

by Inductive automation

The Unlimited SCADA Platform  
of the Future is Here

Download the free trial today at  
[inductiveautomation.com](http://inductiveautomation.com)



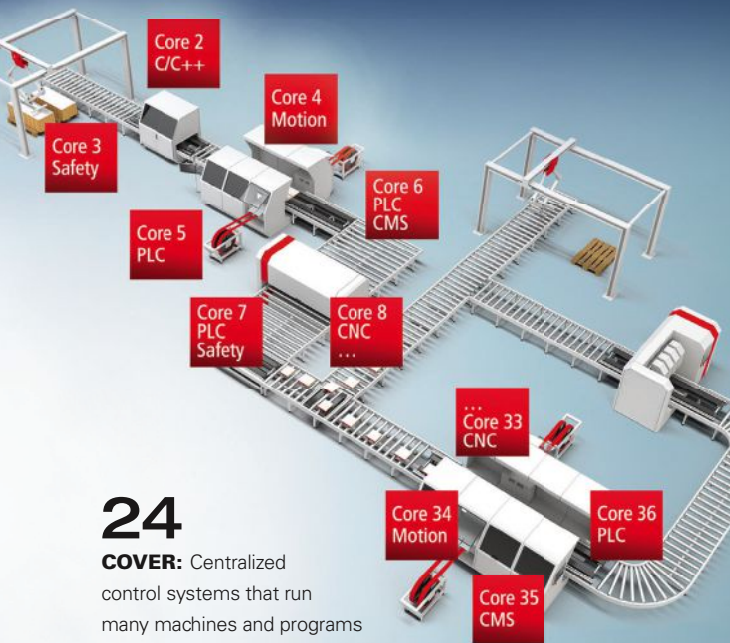


With unlimited high-performance tags, instant web-deployment, and tools for building pure-web applications in HTML5, Ignition 8 will revolutionize the way you control your industrial processes.



Download the free trial today at  
[inductiveautomation.com](http://inductiveautomation.com)





## 24

**COVER:** Centralized control systems that run many machines and programs across a production line provide significant value for manufacturers and machine builders. Courtesy: Beckhoff Automation

## INSIGHTS

- 4 | Research from *Control Engineering*
- 6 | International: Automation approaches to use when market growth slows
- 8 | International: The future of design and manufacturing
- 12 | Technology Update: Not all IIoT platforms are created equal
- 18 | Application Update: Machine retrofit: Network, virtualization

## NEWS

- 19 | PLCs evolve, Offline robotic programming, Advanced manufacturing programming, Temperature sensors hacked, Headlines Online, Correction
- 22 | Think Again: How clear is your 2020?

## ANSWERS

- 24 | Many-core technology fills in the blanks for advanced machine control
- 26 | Smart factory controllers bring security and connectivity
- 28 | Modern controllers ease upgrades
- 30 | Answers on factory controller upgrades
- 32 | Real-time monitoring and control for a water, wastewater operation
- 34 | Using energy harvesting, radio technologies to power wireless sensors
- 35 | Industrial wireless selection and implementation
- 38 | Critical sensor applications: Diagnostics or redundancy?
- 39 | Additive manufacturing: Prototyping reimaged
- 41 | System integrator helps customer with 3-D printing

See webcasts, including – Advanced process control: Past, present and future. [www.controleng.com/webcasts](http://www.controleng.com/webcasts)  
[www.controleng.com/webcasts/past](http://www.controleng.com/webcasts/past)

## INSIDE PROCESS

- P1 | Get flow measurement right the first time
- P4 | Subscription software drives digital transformation

CONTROL ENGINEERING (ISSN 0010-8049, Vol. 67, No. 1, GST #123397457) is published 12x per year, Monthly by CFE Media, LLC, 3010 Highland Parkway, Suite #325 Downers Grove, IL 60515. Jim Langhenry, Group Publisher/Co-Founder; Steve Rourke CEO/COO/Co-Founder. CONTROL ENGINEERING copyright 2020 by CFE Media, LLC. All rights reserved. CONTROL ENGINEERING is a registered trademark of CFE Media, LLC used under license. Periodicals postage paid at Downers Grove, IL 60515 and additional mailing offices. Circulation records are maintained at 3010 Highland Parkway, Suite #325 Downers Grove, IL 60515. Telephone: 630/571-4070. E-mail: [customerservice@cfemedia.com](mailto:customerservice@cfemedia.com). Postmaster: send address changes to CONTROL ENGINEERING, 3010 Highland Parkway, Suite #325 Downers Grove, IL 60515. Publications Mail Agreement No. 40685520. Return undeliverable Canadian addresses to: 3010 Highland Parkway, Suite #325 Downers Grove, IL 60515. Email: [customerservice@cfemedia.com](mailto:customerservice@cfemedia.com). Rates for nonqualified subscriptions, including all issues: USA, \$165/yr; Canada/Mexico, \$200/yr (includes 7% GST, GST#123397457); International air delivery \$350/yr. Except for special issues where price changes are indicated, single copies are available for \$30 US and \$35 foreign. Please address all subscription mail to CONTROL ENGINEERING, 3010 Highland Parkway, Suite #325 Downers Grove, IL 60515. Printed in the USA. CFE Media, LLC does not assume and hereby disclaims any liability to any person for any loss or damage caused by errors or omissions in the material contained herein, regardless of whether such errors result from negligence, accident or any other cause whatsoever.

## 2019 CAREER & SALARY STUDY:

# Learning about the automation engineer

The *Control Engineering* 2019 Career & Salary Study took a deep dive into the earnings of today's automation engineering professionals (see the report from May 2019). Below are background information findings from this study as they relate to these professionals:

**1. Experience:** The average automation engineering professional has worked in their industry for 27 years, has worked for their current employer for 16 years, and is 54 years old; only 14% are under the age of 40 and 25% are in their 60s.

**2. Education:** Fourteen percent of automation engineering professionals have earned an associate's degree as their highest form of education; 47% have achieved their bachelor's degree, 16% have a master's degree, and 3% have a doctoral degree. The top disciplines studied by these professionals are electrical or electronic engineering (49%), controls engineering (25%) and mechanical engineering (25%).

**3. Management role:** Automation

engineering professionals reported an average of 374 employees at their location, with 41% claiming fewer than 100, and 17% stating 1,000 or more. Fifty-eight percent of these professionals are responsible for managing or supervising one or more employees; the average number of employees managed/supervised is 10.

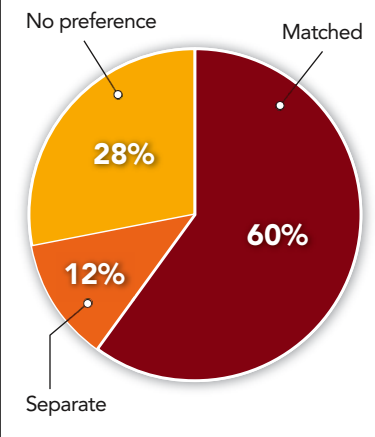
**4. Attitude:** When asked how they feel about their current job, 48% of automation engineering professionals said they love going to work every day; 40% are content and glad to have a job; 10% find their job tolerable, but are open to new opportunities; and 2% are actively seeking new positions. **ce**

At [www.controleng.com/research](http://www.controleng.com/research) find more. **Amanda Pelliccione** is the research director at CFE Media and Technology.



Control Engineering research mentioned on this page are available online. Also see ONLINE TRAINING at [www.controleng.com](http://www.controleng.com).

## Purchasing servo/stepper drive products



Six in 10 engineers prefer to purchase servo and/or stepper drive controller products as matched units; 12% prefer them separate. Source: *Control Engineering* 2019 Motor Drives Study

**35%** of end users have up to 5 robot (units) operating on site or sites for which they are responsible. Source: *Control Engineering* 2019 Robotics Study

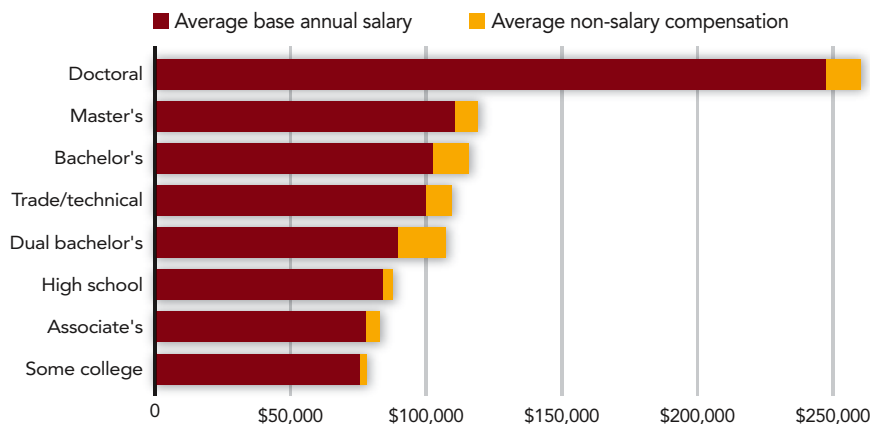
**1 in 5** end users report that their controllers use custom software communications. Source: *Control Engineering* 2018 Programmable Controllers Study

**47%** of end users report receiving a yearly bonus based on their personal performance. Source: *Control Engineering* 2019 Career & Salary Study

## More research

Control Engineering covers several research topics each year. All reports are available at [www.controleng.com/research](http://www.controleng.com/research).

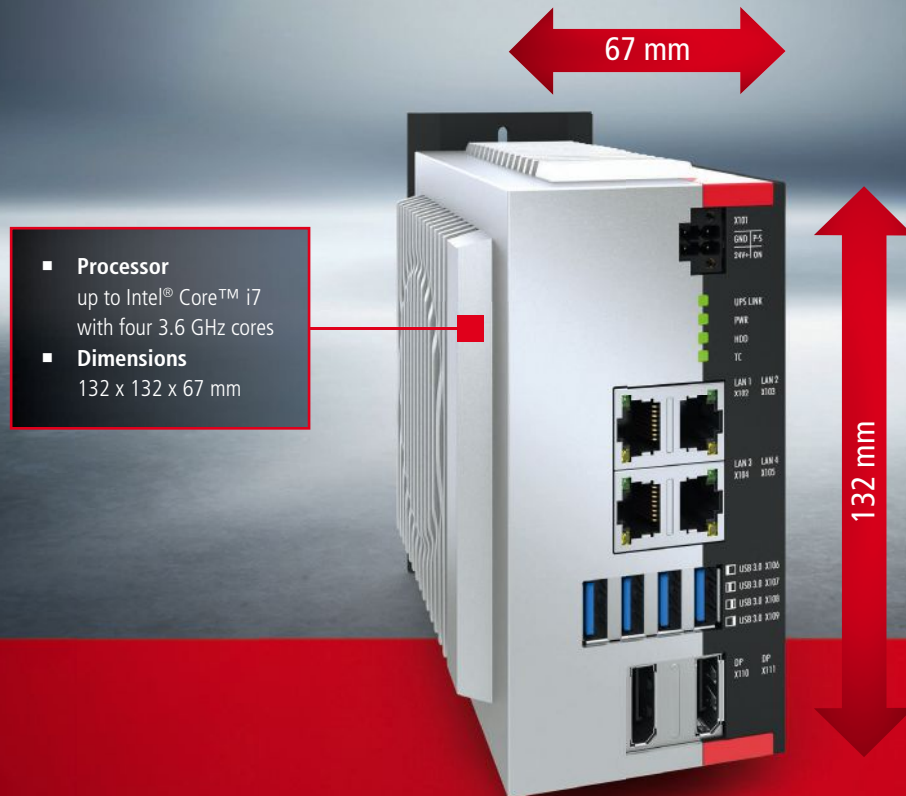
## Average compensation by highest level of education



With almost half of automation engineering professionals having achieved a bachelor's degree as the highest level of education, those respondents' average total take-home pay in 2018 was \$115,793. Source: *Control Engineering*

# Maximum performance, minimum footprint

The ultra-compact C6030 Industrial PC



- **Processor**  
up to Intel® Core™ i7  
with four 3.6 GHz cores
- **Dimensions**  
132 x 132 x 67 mm

[www.beckhoff.us/C6030](http://www.beckhoff.us/C6030)

With the extremely powerful C6030 ultra-compact Industrial PC, Beckhoff covers the range of highly complex, performance-oriented applications with space-saving automation hardware. Whether extensive axis controls, complex HMI applications, extremely short cycle times or large-volume data handling: the computing power of the C6030 can take on almost any automation and visualization task.

- processor: up to Intel® Core™ i7 with four 3.6 GHz cores
- interfaces: 4 Ethernet, 4 USB, 2 DisplayPort
- main memory: up to 32 GB DDR4 RAM

input #4 at [www.controleng.com/information](http://www.controleng.com/information)

